

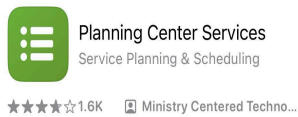
CF Worship Quickstart Guide

Welcome to the Christ First Worship Team! Here are some important next steps!

1. PCO - Services

This is the main source for weekly information for services, scheduling, and resourcing for practicing and preparation. You should expect to check this app regularly, multiple times a week.

- Go to App Store or Google Play Store
- Search for Planning Center Services
- Select and download



- You will receive and email invitation to join Christ First Church's account
- Turn Notifications to ON

The expectation is that you would respond immediately to all requests. If there is a special circumstance that needs a conversation, decline an invite and then contact a team leader to discuss the details. We move quickly, and so often a non-response will simply lead to rescinding of the invite. Please be prompt.

2. Basecamp

- Go to App Store or Google Play Store
- Search for Basecamp
- Select and download



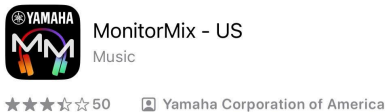
- You will receive and email invitation to join Christ First Church's account
- Turn Notifications to ON

This is where major communications from staff and leadership take place as well as group chats and a detailed yearly team events schedule.

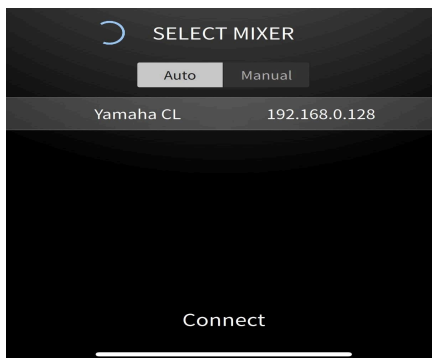
3. Yamaha Monitor Mix

We use an in-ear monitor system. Each new team member will receive their own first set of in-ear monitors. We use Yamaha monitor mix app that is operated through your personal device. Download this application before you arrive for your first workshop or rehearsal so that you will be prepared to jump right in and adjust your very own monitor mix.

- Go to App Store or Google Play Store
- Search for Yamaha Monitor Mix
- Select and download



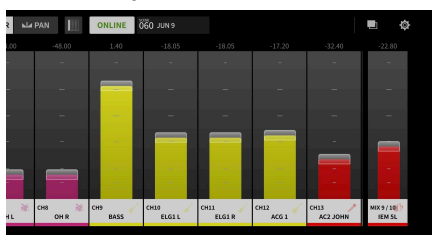
- When arriving in Auditorium, select CF Worship WiFi
 - This network has no internet connection
- Select:



- Select assigned in-ear monitor (IEM):



- Adjust faders to preference:



Rehearsals & Sundays

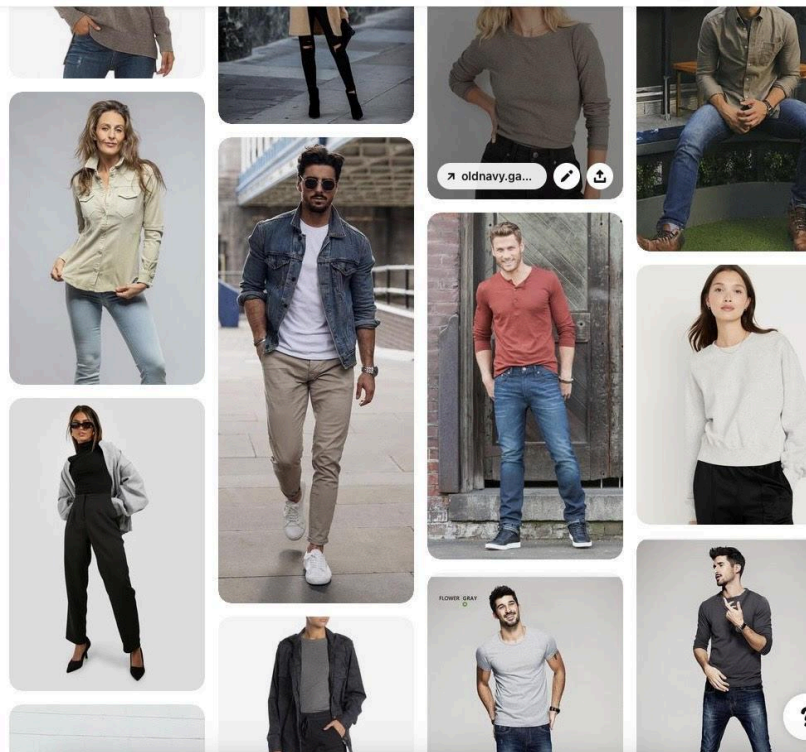
Rehearsals are on Thursdays and we have two Sunday services. Rehearsals are mandatory. If you're unable to make one, let the worship leader know as soon as you can so other arrangements can be made.

Call time for rehearsals is 6:15PM. Call time for Sunday morning is 7:15AM

Dress Expectations

- No shorts, no sleeveless shirts, no graphic tees, no open-toed shoes
- No body-skin showing - (cleavage, midriff, etc)
- No hats
- Pants/Jeans unless otherwise expressed
 - Minimal rips/frays
- No sheer/see-through. Awareness that stage lighting has an effect on clothing that normal lighting does not, especially when being filmed in high resolution. If unsure, wearing an extra layer underneath is helpful.

Pallet/Vibe Chart:



Gear

- Christ First Church owns multiple guitars and effects boards that are approved for use in services. Ask staff about options.
- **Individual effects and instruments** should be approved by a staff lead before use for any event in order to ensure cohesion to desired mix and sound.
- **House sets of in-ear monitors are available for use**, but it is recommended that each member purchase their own. See staff lead for recommendations and specs.